



High Speed Switching Diodes

Series 1N4148-1N4154

Features

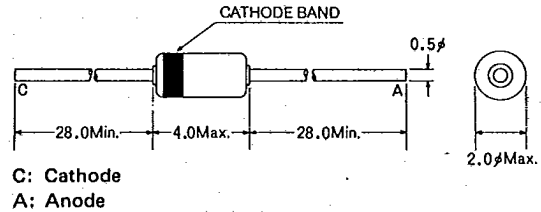
- High reliability (0.2 Fit)
- High speed (trr 2nSec. Typ.)
- Small size (DO-35)
- Glass sealed (Hermetic)

Application

- High speed switching

Package Outline and Physical Dimensions

JEDEC: DO-35 EIAJ: SC-40 (All dimensions in mm)



Absolute Maximum Ratings (Ta = 25°C)

Type No.	Peak voltage V _{RM} (V)	DC voltage V _R (V)	Peak current I _{FM} (mA)	Average current I _O (mA)	DC current I _F (mA)	*Peak forward surge current I _{FSM} (A) (1μsec.)	Power dissipation Pd (mw)
1N4148 1N914	100	75	450	150	200	2	500
1N4154	35	25	450	150	200	2	500
1N4454 1N3064	75	50	450	150	200	2	500

NOTES: T_j: 200°C Topr: -65 ~ 200°C Tstg: -65 ~ 200°C

Electrical Characteristics (Ta = 25°C)

Type	V _F (V)		BV (V)		I _R (μA)		C _T (pF)	trr (nS)		
	@10mA	@30mA	@5μA	@100μA	@25°C	@150°C				
1N4148 1N914	1.0		75	100	0.025 5.0	V _R 20V 75V	50	20V	4	4
1N4154		1.0	35		0.1	25V	100	25V	4	2
1N4454 1N3064	1.0		75		0.1	50V	100	50V	2	2

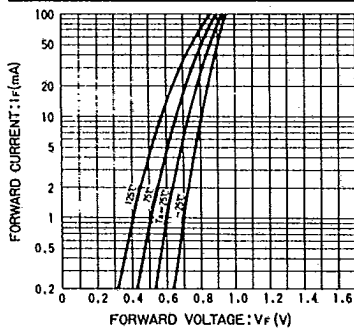


Fig. 1 Forward voltage vs. Forward Current (All Type)

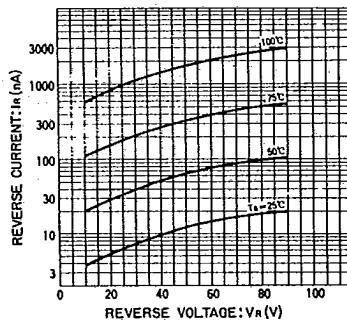


Fig. 2 Reverse current vs. Reverse voltage (All Type)

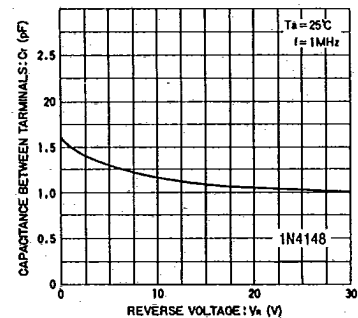


Fig. 3 Capacitance between terminals vs. Reverse voltage

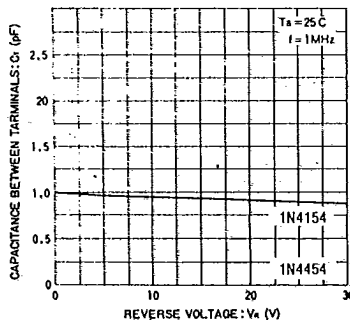


Fig. 4 Capacitance between terminals vs. Reverse Voltage

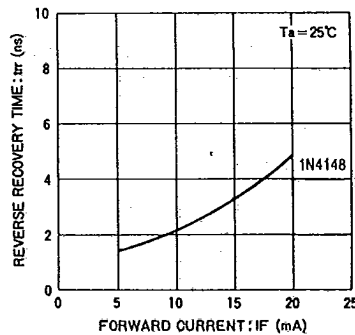


Fig. 5 Reverse recovery time vs. Forward current

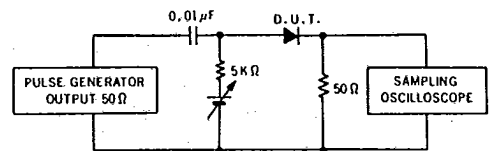


Fig. 7 Reverse recovery time measurement circuit

Available Tape and Reel