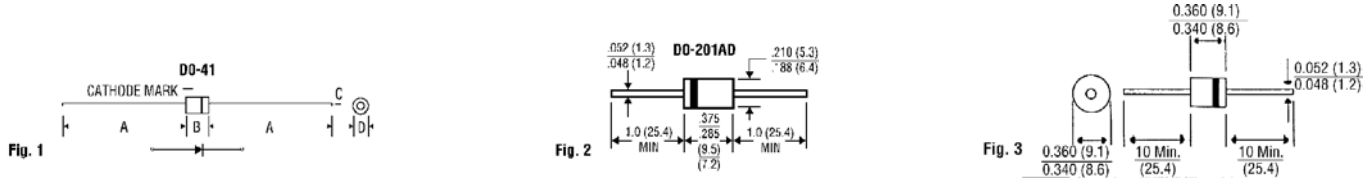


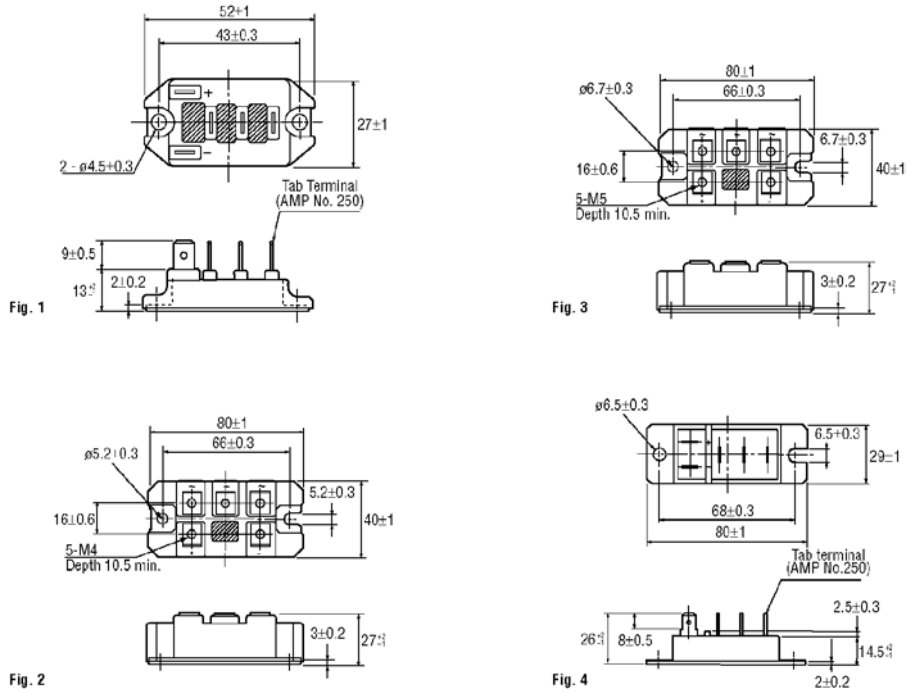
1, 3 and 6 Amp Silicon Rectifiers



Mfr.'s Type*	Fig.	V _{RM} V _{RRM} V _{VRM}	V _R (RMS)	I _o	I _{rms}
1N4001	1	50 V	35 V	1.0 A	30 A
1N4002	1	100 V	70 V	1.0 A	30 A
1N4003	1	200 V	140 V	1.0 A	30 A
1N4004	1	400 V	280 V	1.0 A	30 A
1N4005	1	600 V	420 V	1.0 A	30 A
1N4006	1	800 V	560 V	1.0 A	30 A
1N4007	1	1000 V	700 V	1.0 A	30 A
1N5400	2	50 V	35 V	3.0 A	200 A
1N5402	2	200 V	140 V	3.0 A	200 A
1N5404	2	400 V	280 V	3.0 A	200 A
1N5407	2	800 V	560 V	3.0 A	200 A
1N5408	2	1000 V	700 V	3.0 A	200 A
PX6A03	3	200 V	140 V	6.0 A	400 A
PX6A04	3	400 V	280 V	6.0 A	400 A
PX6A05	3	600 V	420 V	6.0 A	400 A
PX6A06	3	800 V	560 V	6.0 A	400 A
PX6A07	3	1000 V	700 V	6.0 A	400 A

T_JT_{STG} = -65 to +175°C. 3 and 6 amp standard and fast recovery rectifiers also available. *I_r = 0.5 A, I_n = -1.0 A, I_{sm} = -0.25 A. *Figures 1, 2, 3, 4 — Heat sink required to maintain maximum I_o rating.

Standard Recovery — 3 Phase Full Wave Bridge Rectifiers



- Glass Passivated Chip
- Ideal for Inverters, DC Motors and Battery Chargers

Mfr.'s Type*	Fig.	Ratings and Characteristics							
		Rated Voltage (V)	Rated Current (A)	Surge Current (A)	Junction Temperature (°C)	Insulation Voltage (V)	Forward Voltage (V)	Thermal Resistance (°C/W)	
6RI30E-060	1	600	30	360	150	2000	1.10	0.80	
6RI50E-060	2	600	50	480	150	2000	1.20	0.42	
6RI75E-060	3	600	75	1000	150	2000	1.15	0.30	
6RI100E-060	3	600	100	1200	150	2000	1.15	0.22	
6RI50E-080	2	800	50	480	150	2000	1.20	0.42	
6RI75E-080	3	800	75	1000	150	2000	1.15	0.30	
6RI100E-080	3	800	100	1200	150	2000	1.15	0.22	
6RI30G-120	4	1200	30	320	150	2500	1.30	0.80	
6RI75G-120	3	1200	75	1000	150	2500	1.30	0.30	
6RI100G-120	3	1200	100	1200	150	2500	1.25	0.22	
6RI30G-160	4	1600	30	320	150	2500	1.30	0.80	
6RI75G-160	3	1600	75	1000	150	2500	1.30	0.30	
6RI100G-160	3	1600	100	1200	150	2500	1.25	0.22	

Additional circuits and packages also available. *Figures 1, 2, 3, 4 — Heat sink required to maintain maximum I_o rating.

Turn To Section 1 For Allied Office Addresses and Local Phone Numbers

ALLIED ► 801

Searchdatasheet.com