

REVISION CA

DO NOT SCALE THIS DRAWING

ONE PLACE DECIMALS ± .1 [3]	THREE PLACE DECIMALS ± .005 [13]	ANGLES ± 2°	TITLE: TERMINAL SRTP DOUBLE SURFACE MOUNT	DWG NO: TSM-1XX-XX-XXX-XX-XX-XXX-XX
TWO PLACE DECIMALS ± .01 [3]	FOUR PLACE DECIMALS ± .0020 [06]			SHEET 1 OF 3

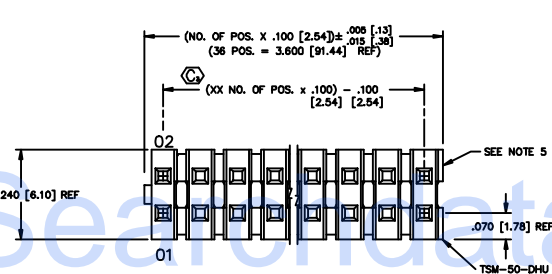
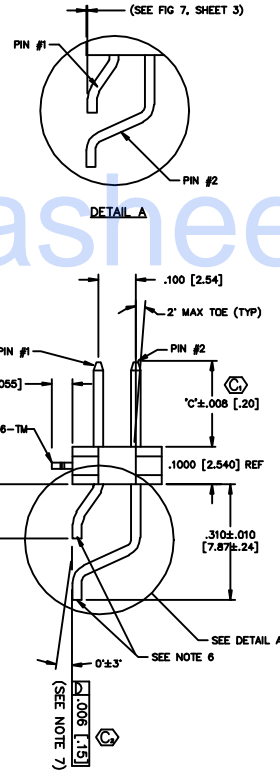


FIG. 1
-LC: LOCKING CLIP OPTION
CLIPS N/A WITH -A OPTION.

ROW OPTION	LEAD STYLE	BOTTOM ROW PIN #1	TOP ROW PIN #2	"C"
-DH	-01	T-156-09-X-2	T-156-20-X-2	.230 [5.84]
-DH	-02	T-156-09-X-2	T-156-20-X-2	.320 [8.13]
-DH	-03	T-156-09-X-2	T-156-20-X-2	.420 [10.67]
-DH	-04 (SEE NOTE 11)	T-156-09-X-2	T-156-20-X-2	.120 [3.05]
-MT	-01	T-156-08-X-2	T-156-20-X-2	.230 [5.84]
-MT	-02	T-156-15-X-2	T-156-20-X-2	.320 [8.13]
-MT	-03	T-156-09-X-2	T-156-20-X-2	.420 [10.67]



- PLATING SPEC.
- T: MATTE TIN, CONTACT AND TAIL
 - S: SELECTIVE, 30 Au / 50 NI MIN ON CONTACT, MATTE TIN TAIL
 - L: LIGHT SELECTIVE, 10 Au / 50 NI MIN ON CONTACT, MATTE TIN TAIL
 - F: FLASH SELECTIVE, 3 Au / 50 NI MIN ON CONTACT, MATTE TIN TAIL
 - H: HEAVY GOLD, 30 Au 50 NI MIN ON CONTACT, 3 Au / 50 NI MIN ON TAIL
 - TL: TIN/LEAD (90/10+/-5%) CONTACT AND TAIL
 - STL: SELECTIVE, 30 Au / 50 NI MIN ON CONTACT, TIN/LEAD (90/10+/-5%) TAIL
 - SM: SELECTIVE, 30 Au / 50 NI MIN ON CONTACT, MATTE TIN TAIL
 - LM: LIGHT SELECTIVE, 10 Au / 50 NI MIN ON CONTACT, MATTE TIN TAIL
 - FM: FLASH SELECTIVE, 3 Au / 50 NI MIN ON CONTACT, MATTE TIN TAIL
 - TM: MATTE TIN CONTACT AND TAIL
 - SS: STRIPED SELECTIVE, 30 Au / 50 NI MIN ON CONTACT, MATTE TIN TAIL (SEE NOTE 14)

ROW OPTION

- DH: DOUBLE HORIZONTAL (USE TSM-50-DHU)
- MT: MIXED TECHNOLOGY (SEE FIG. 4 & TABLE 1) (NOT AVAILABLE WITH -LC, -SL, -TR OR -A OPTIONS)

OPTION #1

- LC: LOCKING CLIP (USE LC-06-TM - SEE FIG. 1) (SEE NOTE 13) (03-36 POS USE 2 PER STRIP, 02 POS USE 1 PER STRIP) (USE TSM-XX-DHU) (NOT AVAILABLE WITH -A OR -SL OPTIONS)
- A: ALIGNMENT PIN (SEE FIG. 2, SHT. 2) (STAKED: 4 POS MIN) (MOLDED: 2 POS MIN) (NOT AVAILABLE WITH -LC OR -SL OPTIONS) (LEAVE BLANK FOR NO HOLD DOWN OPTION)
- SL: SOLDER LOCK (SEE FIG. 6, SHT. 2) (2 POSITION MINIMUM) (NOT AVAILABLE WITH -LC OR -A OPTIONS)

NOTES:

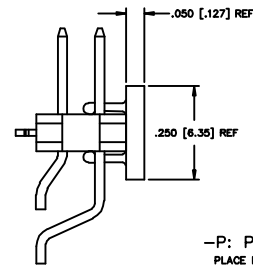
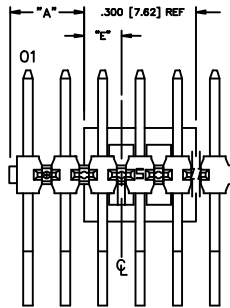
- ⊙ REPRESENTS A CRITICAL DIMENSION.
- DELETED
- DELETED
- DELETED
- .005 [13] MAX CUT FLASH.
- .002 [51] MAX BURR. MUST BE AWAY FROM SMT BOARD SIDE.
- DELETED
- CUT TO POSITION BODIES TO BE MULTI-CUT OR ROTO-CUT ONLY, NEVER AIR CUT.
- TUBE POSITIONS 5-36, BULK PACKAGE POSITIONS 2-4.
- 3 LBS. MIN PUSHOUT FORCE.
- 04 LEAD STYLE DOES NOT MATE WITH SSM-DH.
- ORIENTATION OF PART IN TAPE AND REEL TO BE CONTROLLED BY POCKET DESIGN.
- DUE TO THE HIGH AMOUNT OF INSERTION FORCE NEEDED, THE -LC OPTION IS NOT COMPATIBLE WITH AUTO PLACEMENT. SAMTEC RECOMMENDS MANUAL PLACEMENT FOR ALL ASSEMBLIES WITH THE -LC OPTION.
- SS OPTION ONLY AVAILABLE IN LEAD STYLE -01 AND CAN ONLY MATE WITH SSW, SSO, SSM, ESW, ESQ AND BCS.

NO OF POS	S/S BOW
02 - 10	.0030 [0.80]
11 - 20	.0050 [1.27]
21 - 30	.0070 [1.78]
31 - 36	.0080 [2.03]

DIFFERENT AS SHOWN, OTHERWISE SAME AS FIG. 1.

FOR EVEN: "A" = $\frac{(\text{NO. OF POS. X .100 [2.54]} - .300 [7.62])}{2} + .050 [1.27]$

FOR ODD: "A" = $\frac{(\text{NO. OF POS. X .100 [2.54]} - .300 [7.62])}{2}$



POS.	"E"
ODD	.150 [3.81]
EVEN	.100 [2.54]

FIG. 3
-P: PICK & PLACE PAD
PLACE PPP-08 ON ⊕ AS SHOWN

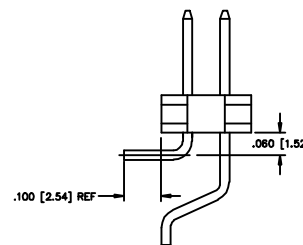
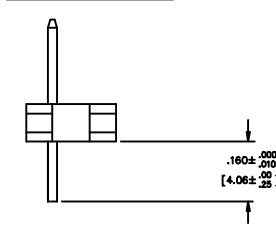
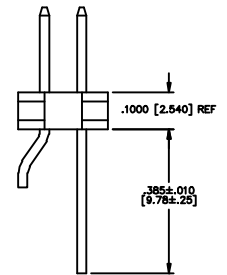


FIG. 4
-MT: MIXED TECHNOLOGY
DIFFERENT AS SHOWN,
OTHERWISE SAME AS FIG. 1
(SEE NOTE 7)

IN-PROCESS 1



IN-PROCESS 2



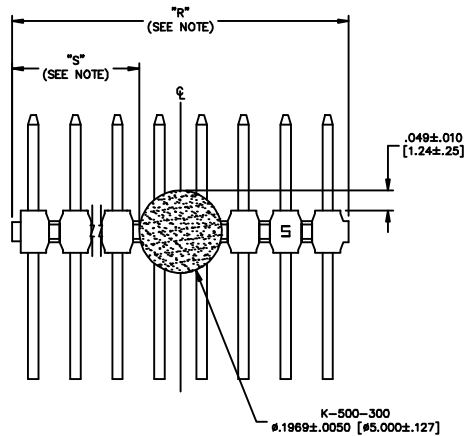
PROPRIETARY NOTE
THIS DRAWING IS THE PROPERTY OF SAMTEC CORPORATION AND IS UNCLASSIFIED. IT IS TO BE USED ONLY FOR THE PURPOSES AND IN THE MANNER SPECIFIED HEREIN. IT IS NOT TO BE REPRODUCED, COPIED, OR TRANSMITTED IN ANY FORM OR BY ANY MEANS, ELECTRONIC OR MECHANICAL, INCLUDING PHOTOCOPYING, RECORDING, OR BY ANY INFORMATION STORAGE AND RETRIEVAL SYSTEM, WITHOUT THE WRITTEN CONSENT OF SAMTEC INC.

MATERIAL:
INSULATOR:
LIQUID CRYSTAL POLYMER
COLOR: BLACK
TERMINALS:
PHOSPHOR BRONZE

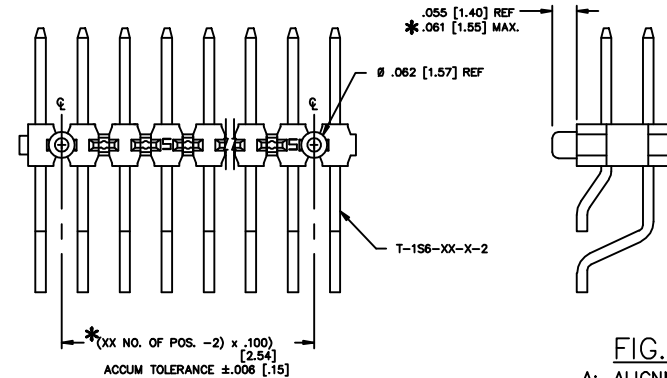
EXISPROD\ASSEMBLY\100
TSM0H
samtec
520 PARK EAST BLDG. NEW ALBANY, INDIANA 47150
PHONE (812) 944-8733 P.O. BOX 1147
CODE 58322

DATE: 07/95
BRATCHER 7-27-95
TSM-1XX-XX-XXX-XX-XX-XXX-XX
SHEET 1 OF 3

NOTE: "R" = USED MEASURED DIMENSION (REF)
 "S" = $\{("R" - .1969 [5.000]) / 2\} \pm .020 [51]$



DIMENSIONS ARE IN INCHES		UNLESS OTHERWISE NOTED		TOLERANCES ARE:	
ONE PLACE DECIMALS $\pm .1 [3]$	TWO PLACE DECIMALS $\pm .01 [3]$	THREE PLACE DECIMALS $\pm .005 [13]$	FOUR PLACE DECIMALS $\pm .0020 [051]$	ANGLES $\pm 2^\circ$	



DIFFERENT AS SHOWN, OTHERWISE SAME AS FIG. 1.

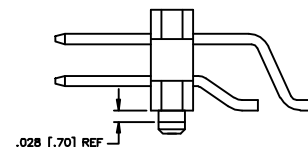
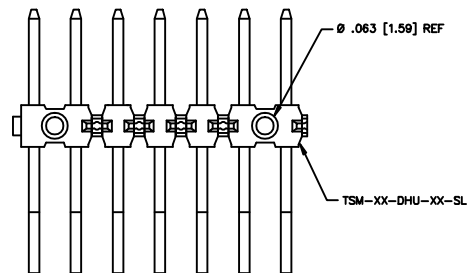
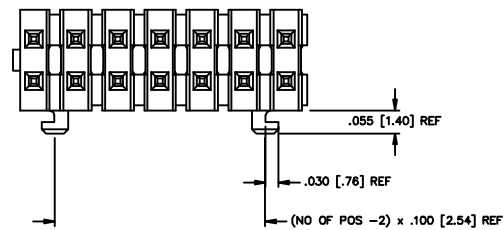


FIG. 6
 -SL: SOLDER LOCK

DIFFERENT AS SHOWN, OTHERWISE SAME AS FIG. 1.

PROPRIETARY NOTE
 THE INFORMATION CONTAINED HEREIN IS THE PROPERTY OF SAMTEC AND IS TO BE USED ONLY FOR THE PURPOSES SPECIFIED IN THE ORDER. IT IS NOT TO BE REPRODUCED, COPIED, OR TRANSMITTED IN ANY FORM OR BY ANY MEANS, ELECTRONIC OR MECHANICAL, INCLUDING PHOTOCOPYING, RECORDING, OR BY ANY INFORMATION STORAGE AND RETRIEVAL SYSTEM, WITHOUT THE WRITTEN PERMISSION OF SAMTEC.

REV. CA

DIMENSIONS ARE IN INCHES		UNLESS OTHERWISE NOTED	TOLERANCES ARE:	TITLE	DWG. NO.
ONE PLACE DECIMALS ± .1 [.3]	THREE PLACE DECIMALS ± .005 [.13]		ANGLES ± 2°	TERMINAL STRIP DOUBLE SURFACE MOUNT	TSM-XX-XX-XX-XX-XX-XX SHEET 3 OF 3
TWO PLACE DECIMALS ± .01 [.3]	FOUR PLACE DECIMALS ± .0020 [.051]				

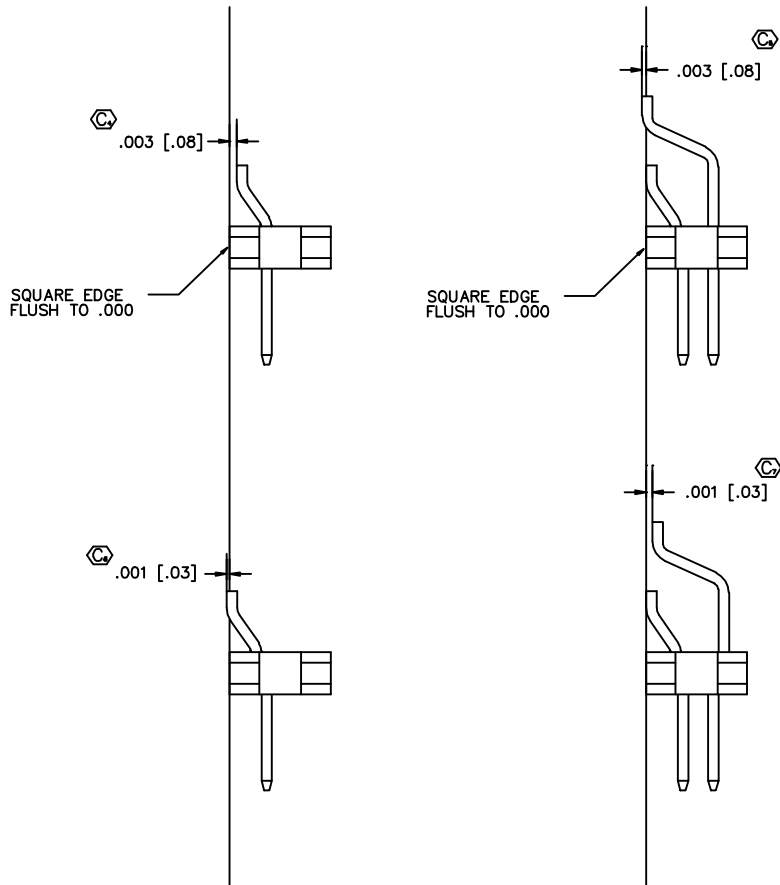
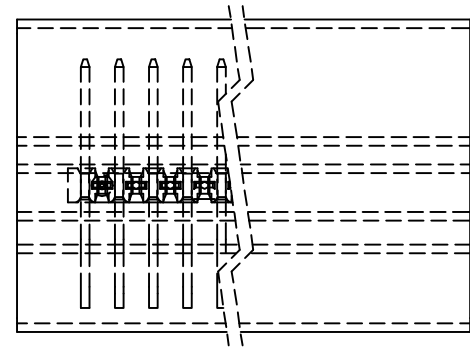
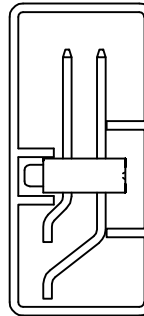


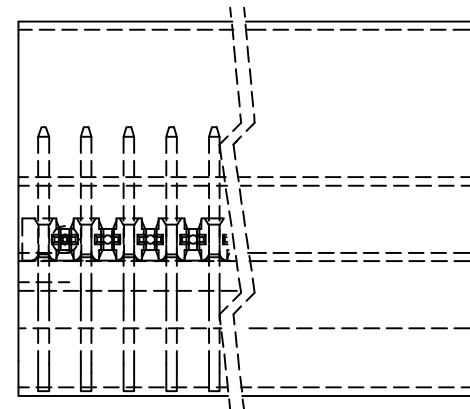
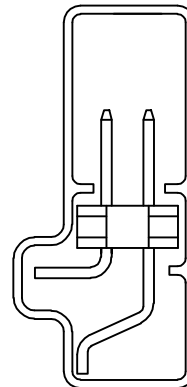
FIG. 7
-DH SURFACEMOUNT DIAGRAM

PROPRIETARY NOTE
THIS DOCUMENT CONTAINS PROPRIETARY INFORMATION OF SAMTEC. IT IS THE PROPERTY OF SAMTEC AND IS LOANED TO YOUR COMPANY. IT IS TO BE USED ONLY FOR THE PURPOSES AUTHORIZED BY SAMTEC. IT IS NOT TO BE REPRODUCED, COPIED, OR DISSEMINATED IN ANY MANNER WITHOUT THE WRITTEN PERMISSION OF SAMTEC.

PACKAGE AS SHOWN
SCALE .75



TUBE: PT-TSM001-DH
PLUG: TP-09



-MT OPTION
TUBE: PT-TSM005-DH-MT
PLUG: TP-29

EXISPROD\ASSEMBLY\100
TSM043

samtec

520 PARK EAST BLDG. NEW ALBANY, INDIANA 47150
PHONE (812) 944-8733 P.O. BOX 1147
CODE 68322

DATE BY: BRATCHER 7-27-95

TSM-XX-XX-XX-XX-XX-XX
SHEET 3 OF 3